



••• Fund Ledger

MANAGE FINANCES

- Separate fiscal year ending dates can be specified for each fund, thus allowing for separate year end closing.
- With proper security, transactions can be posted to any accounting period. However, supervisory personnel have the flexibility to declare a period 'closed' to further transactions.
- Multiple years can be open at one time. Switching between years is as easy as choosing a menu option.
- Changes to prior year ledger balances automatically update beginning balances in the current year.
- Provides for automatic fund balancing to record transactions that cross funds.
- Automatic update from other subsystems on demand.
- Original budget amounts along with a budget change history are maintained and reported.
- Supports the use of standard journal entry templates and automatic reversal of accruals.

ANALYZE INFORMATION

- Print financial statements at any time and for any date.
- Drill down capability on any account provides detailed information for ledger transactions and encumbrances.
- Through the security system, ledger access can be granted or denied on a menu or menu option basis. Access can also be restricted to selected account numbers.
- Special report criteria selections provide flexible reporting options and give you the ability to save defined selections for repeated use.
- Easily export reports to a wide variety of formats, such as Excel.

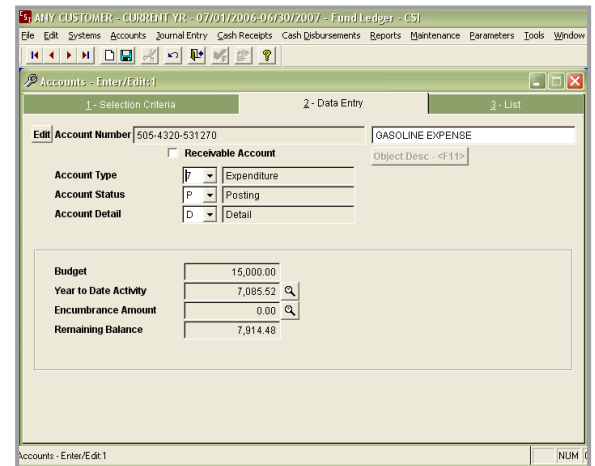
STRUCTURE ACCOUNTS

- Supports an unlimited number of funds.
- Designate custom groups of accounts for budgeting and reporting. Budget amounts can be assigned to a single account or multiple accounts within the group.
- Utilize up to 40-digit, user-defined account. Up to 11 account segments can be defined.

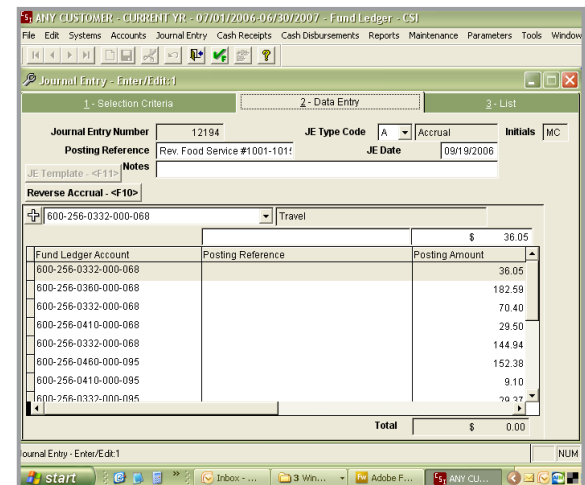
REPORTING

- Chart of Accounts
- Budget Reports
- Trial Balance
- Balance Sheet
- Revenue & Expenditure Report
- Detail Account Inquiry
- Encumbrance Reports
- Transaction Report by Batch
- Special Activity Report

••• Module Screenshot



ACCOUNTS - ENTER/EDIT



JOURNAL ENTRY - ENTER/EDIT